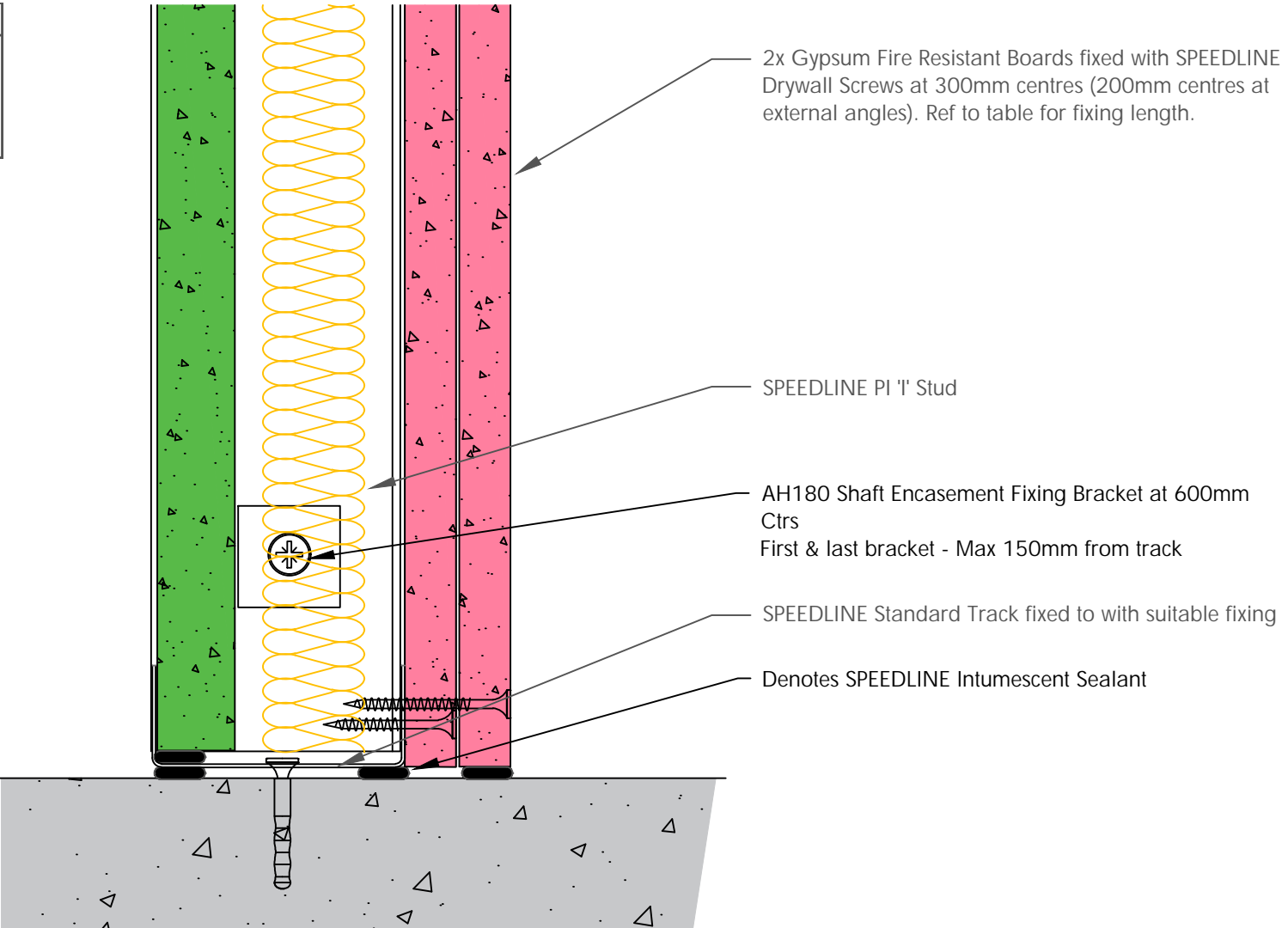


Board Thickness	Speedline Drywall Fixing Length
12.5mm & 15mm	25mm
12.5mm + 12.5mm	25mm + 38mm
12.5mm + 15mm	25mm + 42mm
15mm + 15mm	25mm + 42mm



2x Gypsum Fire Resistant Boards fixed with SPEEDLINE Drywall Screws at 300mm centres (200mm centres at external angles). Ref to table for fixing length.

SPEEDLINE PI 'I' Stud

AH180 Shaft Encasement Fixing Bracket at 600mm Ctrs
First & last bracket - Max 150mm from track

SPEEDLINE Standard Track fixed to with suitable fixing

Denotes SPEEDLINE Intumescent Sealant

All performance data and system specifications are for systems constructed with materials & components as shown. The inclusion or substitution of any other manufacturers materials or components could invalidate test data and system performance and permission must be given in writing by SIG PLC.

The information is provided in good faith and is based upon details received which are assumed to include all relevant facts.

We accept no liability for its accuracy, adequacy or completeness. Recipients must satisfy themselves as to its suitability as we do not accept responsibility for any claims or consequential loss. Acceptance of the content and subsequent design responsibility rests entirely with the recipients who should then produce accepted details on their own company documentation.

CDR No: 1083a SCALE: NTS DATE: 30/04/18

SHAFT ENCASEMENT PARTITION SYSTEM - BASE DETAIL

Details to be read in conjunction with project specification guidelines

Adsetts House,
16 Europa View,
Sheffield Business Park,
Sheffield,
S9 1XH.

T: 0114 231 8030

E: enquiries@speedlinedrywall.co.uk

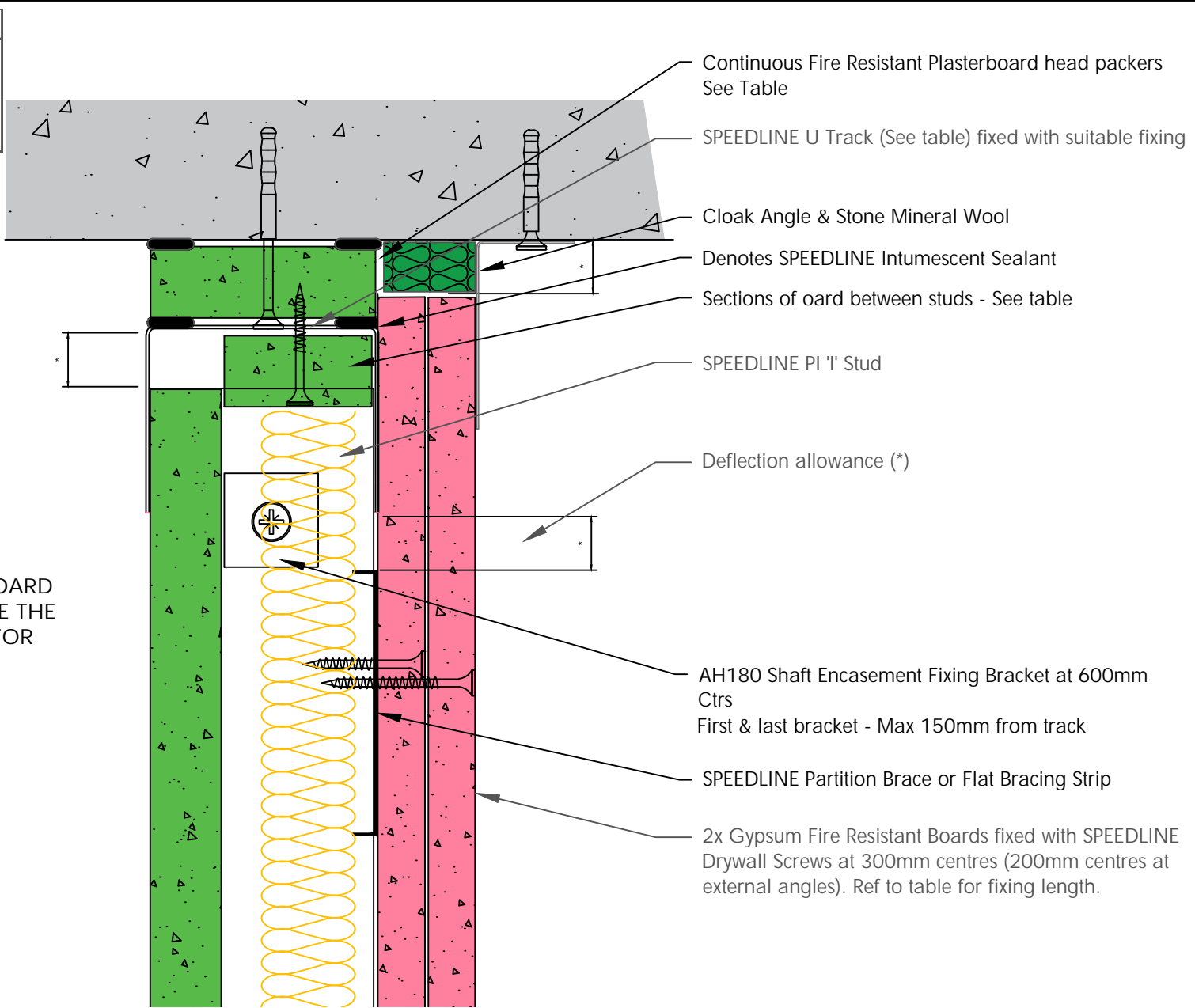


Board Thickness	Speedline Drywall Fixing Length
12.5mm & 15mm	25mm
12.5mm + 12.5mm	25mm + 38mm
12.5mm + 15mm	25mm + 42mm
15mm + 15mm	25mm + 42mm

HEAD PACKER THICKNESS PER DEFLECTION ALLOWANCE		
Deflection	Head Track	
Up to 15mm	SPEEDT	Min 19mm CB
Up to 25mm	SPEEDT	Min 2x15mm FR
Up to 30mm	SPEEDT	Min 2x19mm CB

CB=CoreBoard FR=Fire Resistant

DO NOT SCREW FIX PLASTERBOARD TO THE STUD OR TRACK ABOVE THE PARTITION BRACE TO ALLOW FOR DEFLECTION



- Continuous Fire Resistant Plasterboard head packers
See Table
- SPEEDLINE U Track (See table) fixed with suitable fixing
- Cloak Angle & Stone Mineral Wool
- Denotes SPEEDLINE Intumescent Sealant
- Sections of board between studs - See table
- SPEEDLINE PI 'I' Stud
- Deflection allowance (*)
- AH180 Shaft Encasement Fixing Bracket at 600mm
Ctrs
First & last bracket - Max 150mm from track
- SPEEDLINE Partition Brace or Flat Bracing Strip
- 2x Gypsum Fire Resistant Boards fixed with SPEEDLINE
Drywall Screws at 300mm centres (200mm centres at
external angles). Ref to table for fixing length.

All performance data and system specifications are for systems constructed with materials & components as shown. The inclusion or substitution of any other manufacturers materials or components could invalidate test data and system performance and permission must be given in writing by SIG PLC.

The information is provided in good faith and is based upon details received which are assumed to include all relevant facts.

We accept no liability for its accuracy, adequacy or completeness. Recipients must satisfy themselves as to its suitability as we do not accept responsibility for any claims or consequential loss. Acceptance of the content and subsequent design responsibility rests entirely with the recipients who should then produce accepted details on their own company documentation.

CDR No: 77 SCALE: NTS DATE: 30/04/18

SHAFT ENCASEMENT PARTITION SYSTEM - DEFLECTION
HEAD GENERAL LAYOUT
90-120 MINS

Details to be read in conjunction with project specification guidelines

Adsetts House,
16 Europa View,
Sheffield Business Park,
Sheffield,
S9 1XH.

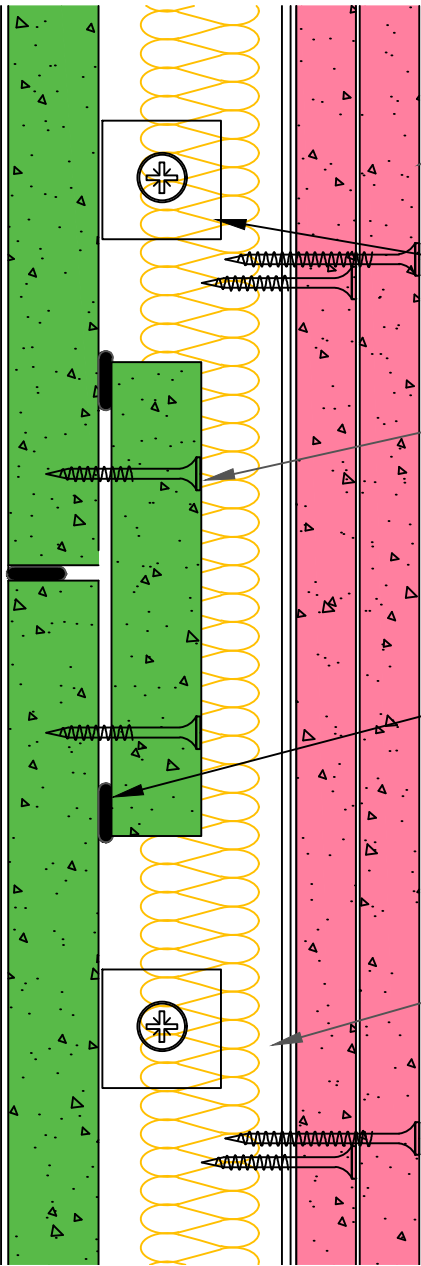
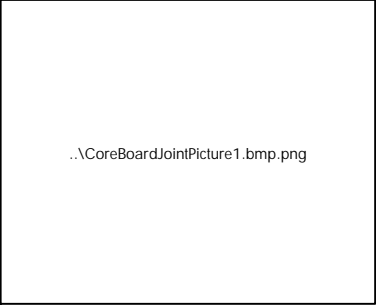
T: 0114 231 8030

E: enquiries@speedlinedrywall.co.uk



Part of SIG plc

Board Thickness	Speedline Drywall Fixing Length
12.5mm & 15mm	25mm
12.5mm + 12.5mm	25mm + 38mm
12.5mm + 15mm	25mm + 42mm
15mm + 15mm	25mm + 42mm



2x Gypsum Fire Resistant Boards fixed with SPEEDLINE Drywall Screws at 300mm centres (200mm centres at external angles). Ref to table for fixing length.

AH180 Shaft Encasement Fixing Bracket above and below joint in Core board

100mm Min section of Core board between studs sealed with SPEEDLINE Intumescent Sealant.

Denotes SPEEDLINE Intumescent Sealant

SPEEDLINE PI 'I' Stud

All performance data and system specifications are for systems constructed with materials & components as shown. The inclusion or substitution of any other manufacturers materials or components could invalidate test data and system performance and permission must be given in writing by SIG PLC.

The information is provided in good faith and is based upon details received which are assumed to include all relevant facts.

We accept no liability for its accuracy, adequacy or completeness. Recipients must satisfy themselves as to its suitability as we do not accept responsibility for any claims or consequential loss. Acceptance of the content and subsequent design responsibility rests entirely with the recipients who should then produce accepted details on their own company documentation.

CDR No: 1083b	SCALE: NTS	DATE: 08/05/18
SHAFT ENCASEMENT PARTITION SYSTEM - CORE BOARD JOINT		
Details to be read in conjunction with project specification guidelines		

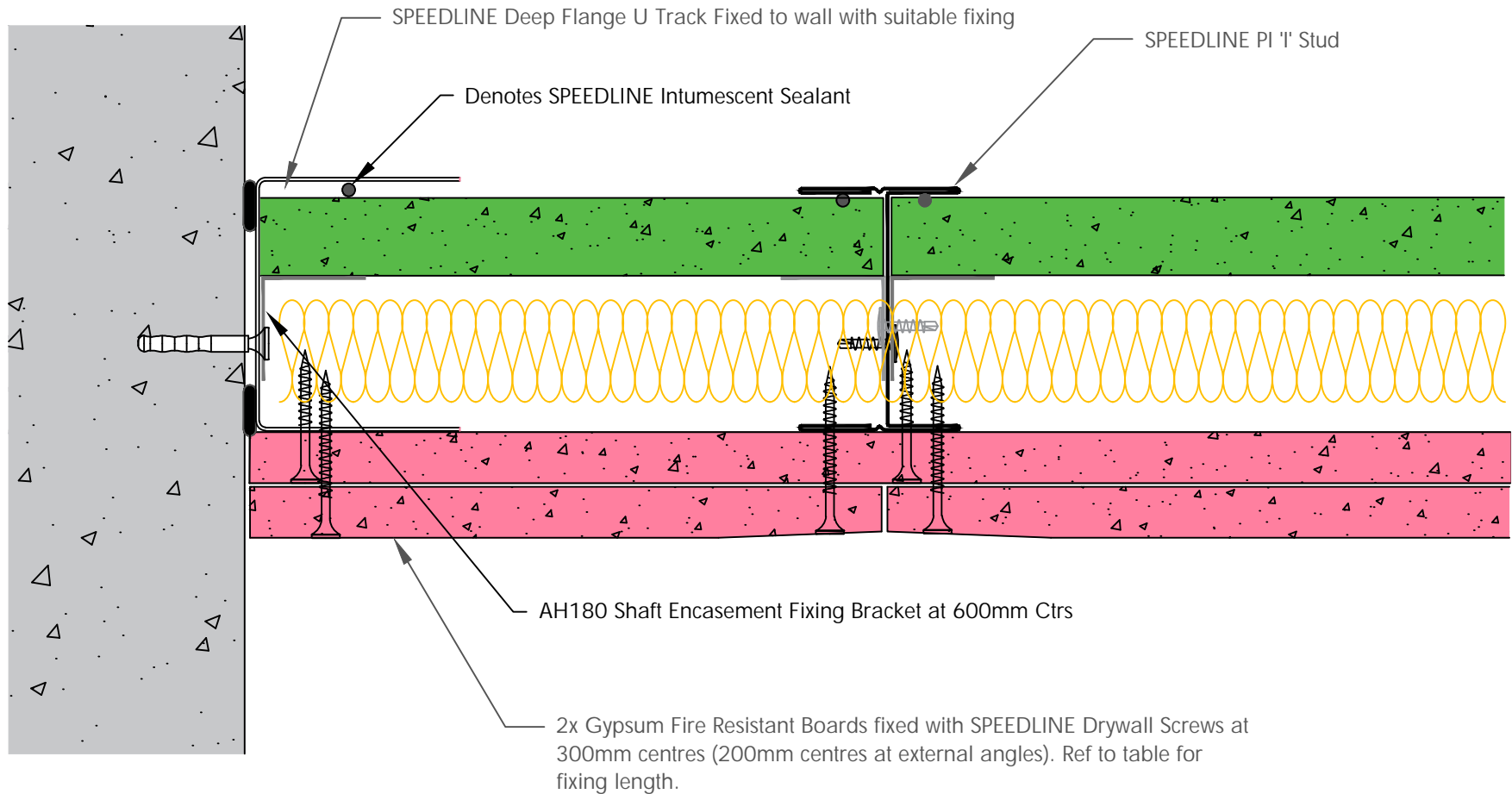
Adsetts House,
16 Europa View,
Sheffield Business Park,
Sheffield,
S9 1XH.

T: 0114 231 8030

E: enquiries@speedlinedrywall.co.uk



Board Thickness	Speedline Drywall Fixing Length
12.5mm & 15mm	25mm
12.5mm + 12.5mm	25mm + 38mm
12.5mm + 15mm	25mm + 42mm
15mm + 15mm	25mm + 42mm



All performance data and system specifications are for systems constructed with materials & components as shown. The inclusion or substitution of any other manufacturers materials or components could invalidate test data and system performance and permission must be given in writing by SIG PLC.

The information is provided in good faith and is based upon details received which are assumed to include all relevant facts.

We accept no liability for its accuracy, adequacy or completeness. Recipients must satisfy themselves as to its suitability as we do not accept responsibility for any claims or consequential loss. Acceptance of the content and subsequent design responsibility rests entirely with the recipients who should then produce accepted details on their own company documentation.

CDR No: 70 SCALE: NTS DATE: 30/04/18

SHAFT ENCASEMENT PARTITION SYSTEM - START WALL
 DETAIL
 GENERAL LAYOUT

Details to be read in conjunction with project specification guidelines

Adsetts House,
 16 Europa View,
 Sheffield Business Park,
 Sheffield,
 S9 1XH.

T: 0114 231 8030

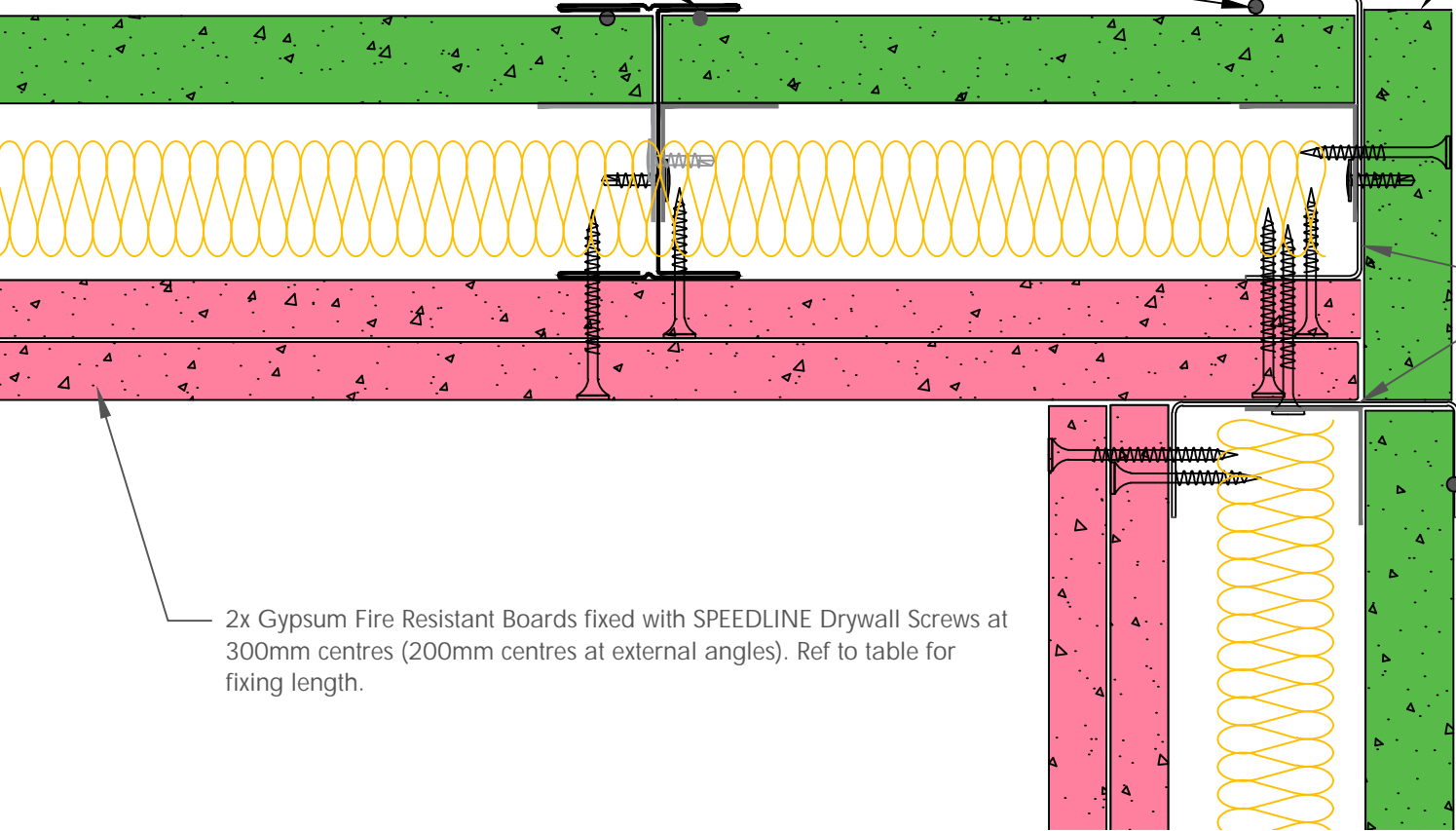
E: enquiries@speedlinedrywall.co.uk



Board Thickness	Speedline Drywall Fixing Length
12.5mm & 15mm	25mm
12.5mm + 12.5mm	25mm + 38mm
12.5mm + 15mm	25mm + 42mm
15mm + 15mm	25mm + 42mm

Denotes SPEEDLINE Intumescent Sealant

Coreboard fixed to outside of Track



SPEEDLINE Tracks fixed together at max 600mm Ctrs

2x Gypsum Fire Resistant Boards fixed with SPEEDLINE Drywall Screws at 300mm centres (200mm centres at external angles). Ref to table for fixing length.

All performance data and system specifications are for systems constructed with materials & components as shown. The inclusion or substitution of any other manufacturers materials or components could invalidate test data and system performance and permission must be given in writing by SIG PLC.

The information is provided in good faith and is based upon details received which are assumed to include all relevant facts.

We accept no liability for its accuracy, adequacy or completeness. Recipients must satisfy themselves as to its suitability as we do not accept responsibility for any claims or consequential loss. Acceptance of the content and subsequent design responsibility rests entirely with the recipients who should then produce accepted details on their own company documentation.

CDR No: 71	SCALE: NTS	DATE: 30/04/18
SHAFT ENCASEMENT PARTITION SYSTEM - INSIDE CORNER GENERAL LAYOUT		
Details to be read in conjunction with project specification guidelines		

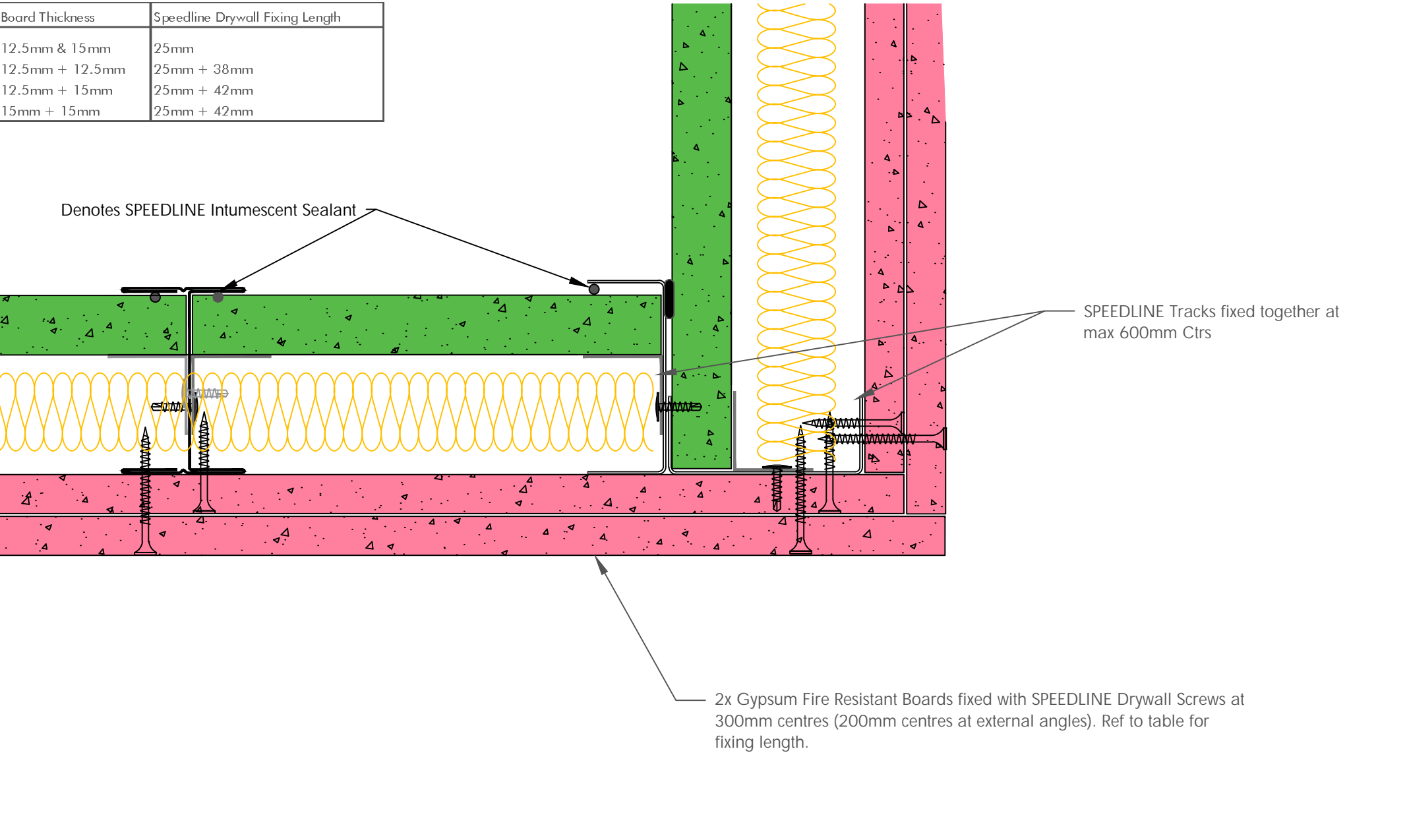
Adsetts House,
16 Europa View,
Sheffield Business Park,
Sheffield,
S9 1XH.

T: 0114 231 8030

E: enquiries@speedlinedrywall.co.uk



Board Thickness	Speedline Drywall Fixing Length
12.5mm & 15mm	25mm
12.5mm + 12.5mm	25mm + 38mm
12.5mm + 15mm	25mm + 42mm
15mm + 15mm	25mm + 42mm



Denotes SPEEDLINE Intumescent Sealant

SPEEDLINE Tracks fixed together at max 600mm Ctrs

2x Gypsum Fire Resistant Boards fixed with SPEEDLINE Drywall Screws at 300mm centres (200mm centres at external angles). Ref to table for fixing length.

All performance data and system specifications are for systems constructed with materials & components as shown. The inclusion or substitution of any other manufacturers materials or components could invalidate test data and system performance and permission must be given in writing by SIG PLC.

The information is provided in good faith and is based upon details received which are assumed to include all relevant facts.

We accept no liability for its accuracy, adequacy or completeness. Recipients must satisfy themselves as to its suitability as we do not accept responsibility for any claims or consequential loss. Acceptance of the content and subsequent design responsibility rests entirely with the recipients who should then produce accepted details on their own company documentation.

CDR No: 72	SCALE: NTS	DATE: 30/04/18
SHAFT ENCASEMENT PARTITION SYSTEM - OUTSIDE CORNER GENERAL LAYOUT		
Details to be read in conjunction with project specification guidelines		

Adsetts House,
16 Europa View,
Sheffield Business Park,
Sheffield,
S9 1XH.

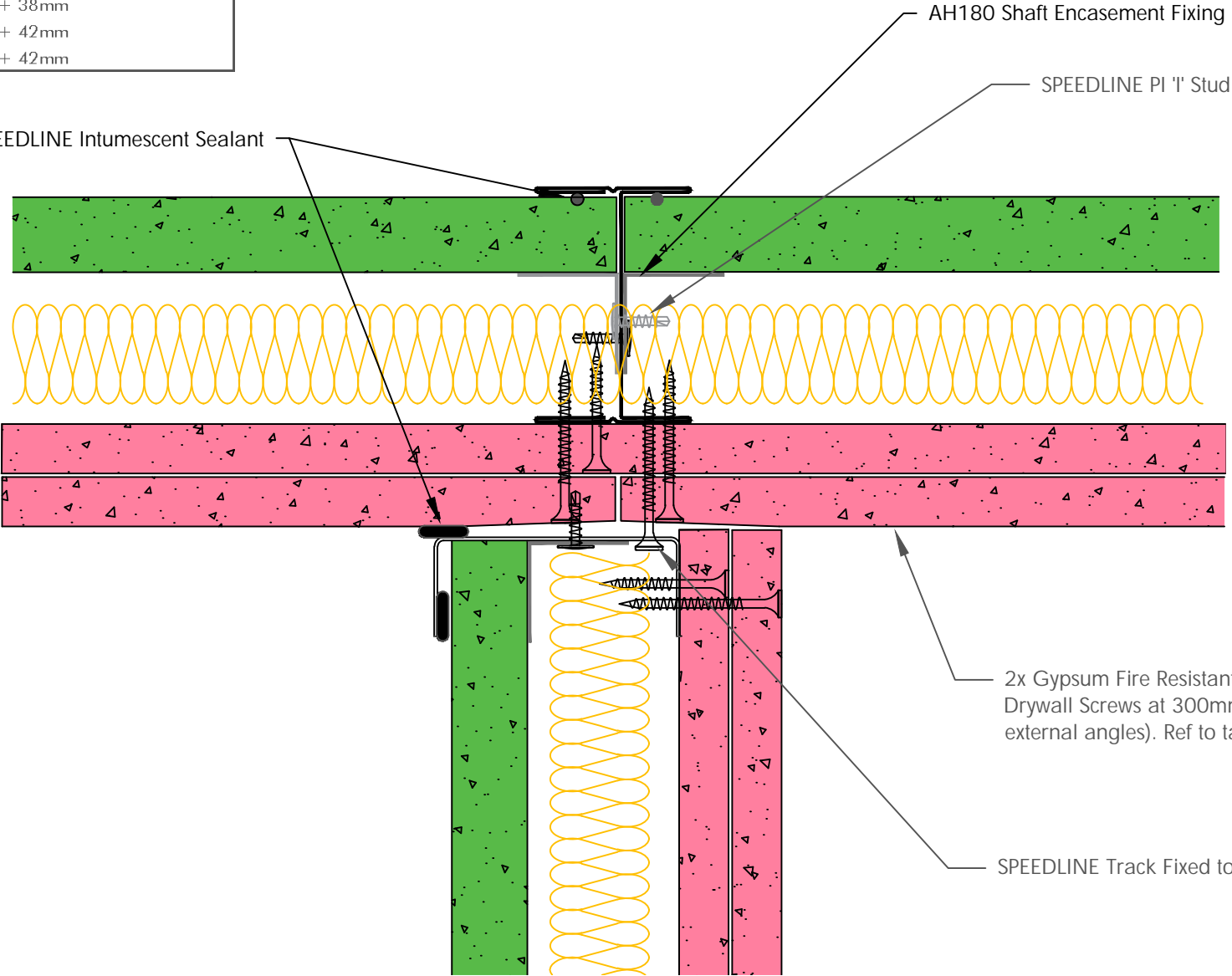
T: 0114 231 8030

E: enquiries@speedlinedrywall.co.uk



Board Thickness	Speedline Drywall Fixing Length
12.5mm & 15mm	25mm
12.5mm + 12.5mm	25mm + 38mm
12.5mm + 15mm	25mm + 42mm
15mm + 15mm	25mm + 42mm

Denotes SPEEDLINE Intumescent Sealant



AH180 Shaft Encasement Fixing Bracket at 600mm Ctrs

SPEEDLINE PI 'I' Stud

2x Gypsum Fire Resistant Boards fixed with SPEEDLINE Drywall Screws at 300mm centres (200mm centres at external angles). Ref to table for fixing length.

SPEEDLINE Track Fixed to I Stud with suitable fixing

All performance data and system specifications are for systems constructed with materials & components as shown. The inclusion or substitution of any other manufacturers materials or components could invalidate test data and system performance and permission must be given in writing by SIG PLC.

The information is provided in good faith and is based upon details received which are assumed to include all relevant facts.

We accept no liability for its accuracy, adequacy or completeness. Recipients must satisfy themselves as to its suitability as we do not accept responsibility for any claims or consequential loss. Acceptance of the content and subsequent design responsibility rests entirely with the recipients who should then produce accepted details on their own company documentation.

CDR No: 74	SCALE: NTS	DATE: 30/04/18
SHAFT ENCASEMENT PARTITION SYSTEM - JUNCTION ROOM SIDE GENERAL LAYOUT		
Details to be read in conjunction with project specification guidelines		

Adsetts House,
16 Europa View,
Sheffield Business Park,
Sheffield,
S9 1XH.

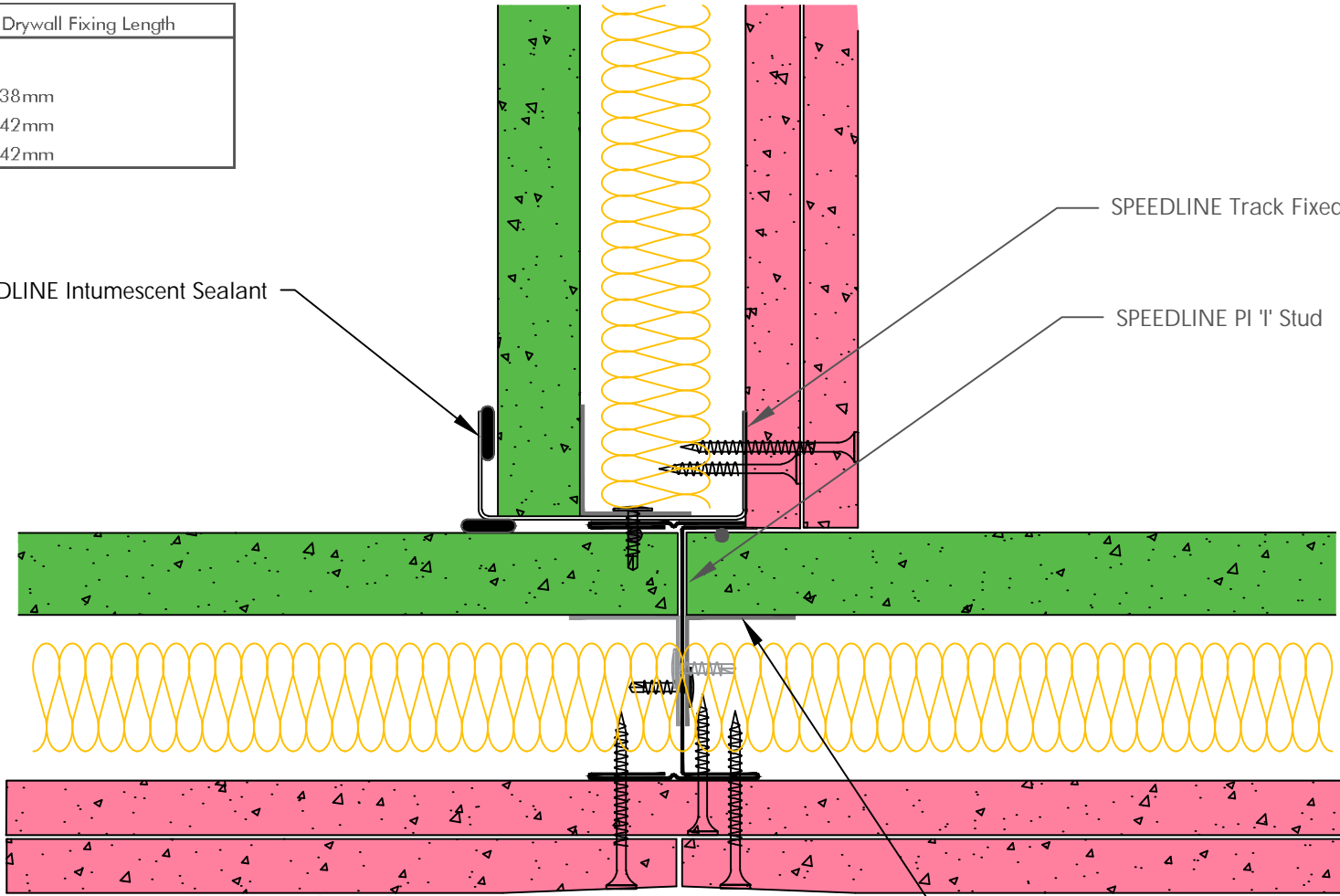
T: 0114 231 8030

E: enquiries@speedlinedrywall.co.uk



Board Thickness	Speedline Drywall Fixing Length
12.5mm & 15mm	25mm
12.5mm + 12.5mm	25mm + 38mm
12.5mm + 15mm	25mm + 42mm
15mm + 15mm	25mm + 42mm

Denotes SPEEDLINE Intumescent Sealant



SPEEDLINE Track Fixed to 'I' Stud with suitable fixing

SPEEDLINE PI 'I' Stud

AH180 Shaft Encasement Fixing Bracket at 600mm Ctrs

2x Gypsum Fire Resistant Boards fixed with SPEEDLINE Drywall Screws at 300mm centres (200mm centres at external angles). Ref to table for fixing length.

All performance data and system specifications are for systems constructed with materials & components as shown. The inclusion or substitution of any other manufacturers materials or components could invalidate test data and system performance and permission must be given in writing by SIG PLC.

The information is provided in good faith and is based upon details received which are assumed to include all relevant facts.

We accept no liability for its accuracy, adequacy or completeness. Recipients must satisfy themselves as to its suitability as we do not accept responsibility for any claims or consequential loss. Acceptance of the content and subsequent design responsibility rests entirely with the recipients who should then produce accepted details on their own company documentation.

CDR No: 73 SCALE: NTS DATE: 30/04/18

SHAFT ENCASUREMENT PARTITION SYSTEM - JUNCTION
SHAFT SIDE
GENERAL LAYOUT

Details to be read in conjunction with project specification guidelines

Adsetts House,
16 Europa View,
Sheffield Business Park,
Sheffield,
S9 1XH.

T: 0114 231 8030

E: enquiries@speedlinedrywall.co.uk



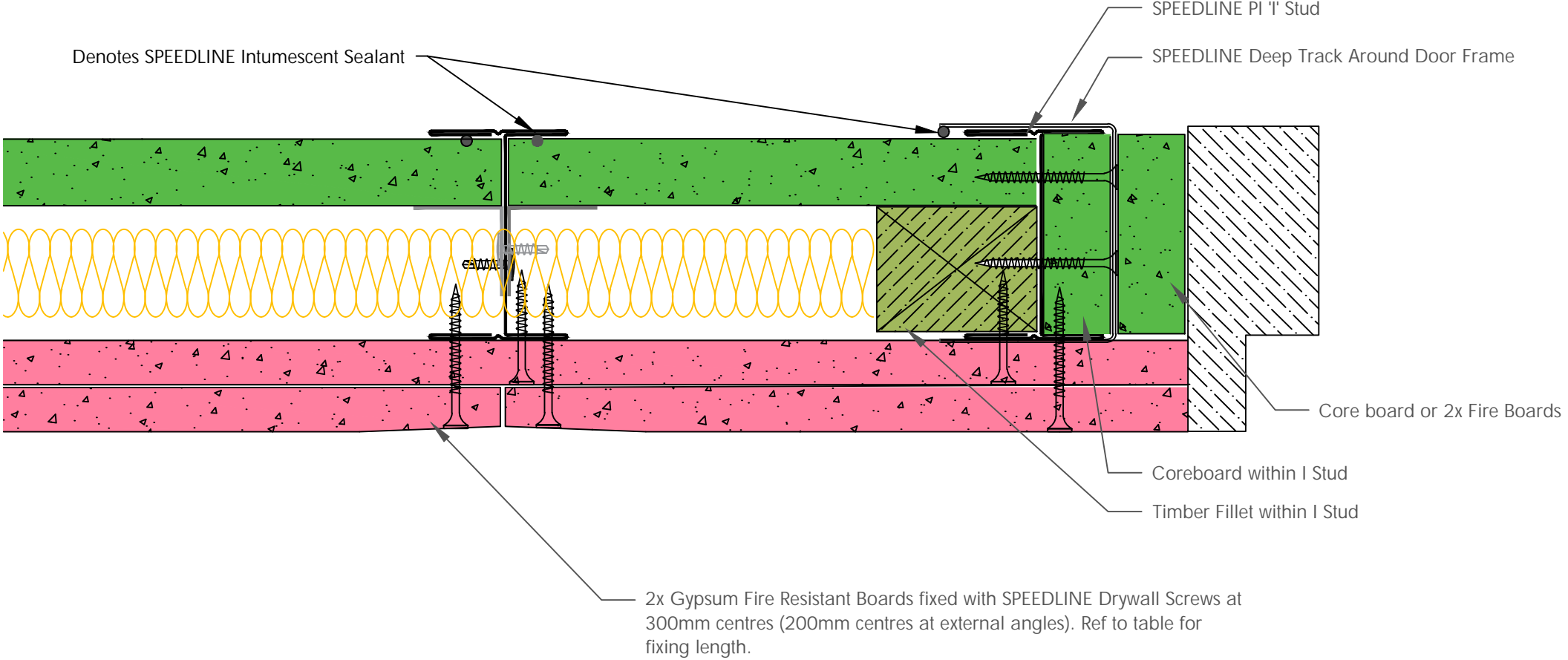
Part of sig plc

Board Thickness	Speedline Drywall Fixing Length
12.5mm & 15mm	25mm
12.5mm + 12.5mm	25mm + 38mm
12.5mm + 15mm	25mm + 42mm
15mm + 15mm	25mm + 42mm

Denotes SPEEDLINE Intumescent Sealant

SPEEDLINE PI 'I' Stud

SPEEDLINE Deep Track Around Door Frame



To be read in conjunction with door manufacturers details & information

All performance data and system specifications are for systems constructed with materials & components as shown. The inclusion or substitution of any other manufacturers materials or components could invalidate test data and system performance and permission must be given in writing by SIG PLC.

The information is provided in good faith and is based upon details received which are assumed to include all relevant facts.

We accept no liability for its accuracy, adequacy or completeness. Recipients must satisfy themselves as to its suitability as we do not accept responsibility for any claims or consequential loss. Acceptance of the content and subsequent design responsibility rests entirely with the recipients who should then produce accepted details on their own company documentation.

CDR No: 43

SCALE: NTS

DATE: 30/04/18

SHAFT ENCASEMENT PARTITION SYSTEM - DOOR FRAME
GENERAL LAYOUT

Details to be read in conjunction with project specification guidelines

Adsetts House,
16 Europa View,
Sheffield Business Park,
Sheffield,
S9 1XH.

T: 0114 231 8030

E: enquiries@speedlinedrywall.co.uk



Part of sig plc